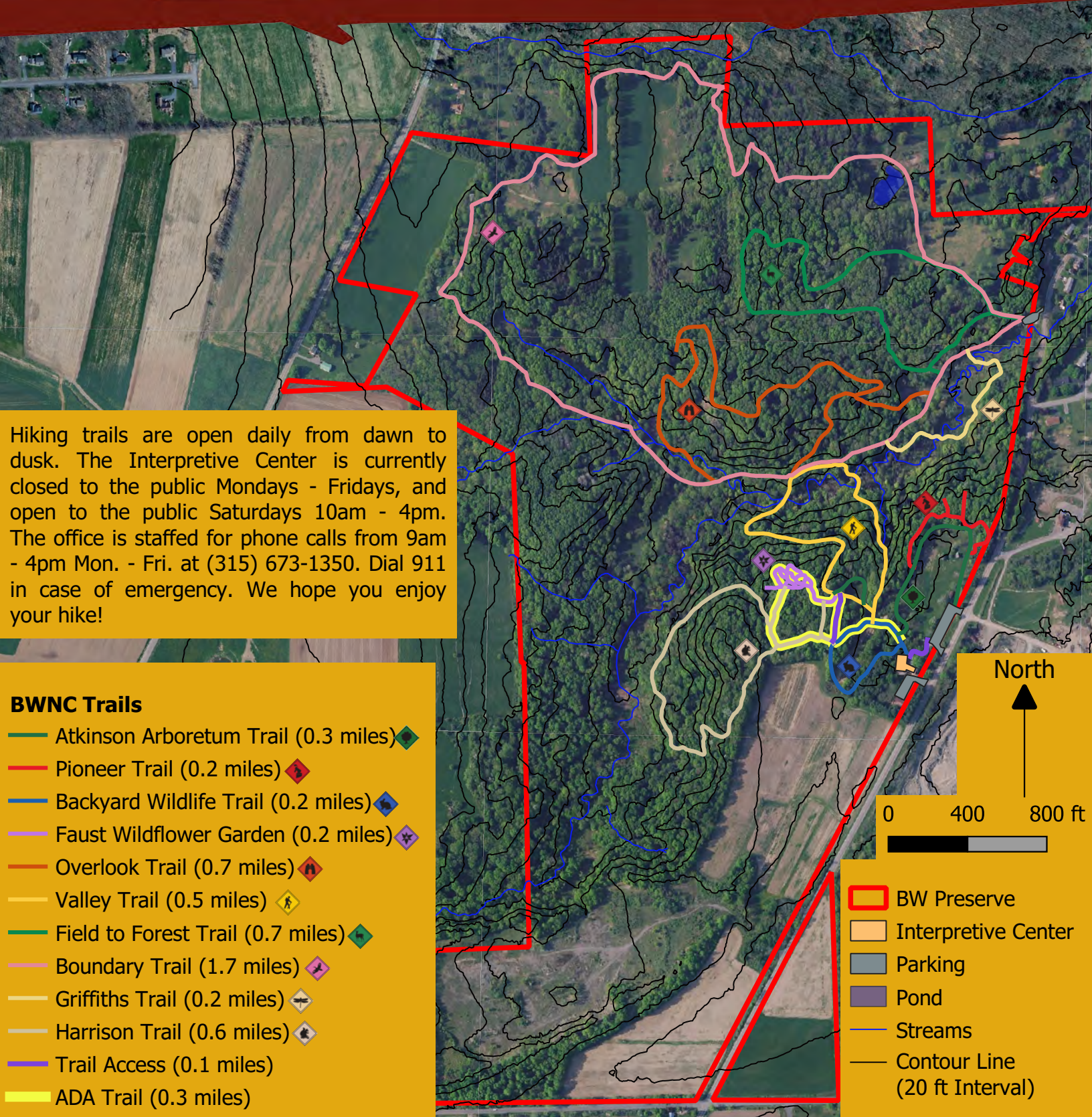




**Baltimore Woods  
Nature Center**  
*Nature in your hands*

# Trail Map



Hiking trails are open daily from dawn to dusk. The Interpretive Center is currently closed to the public Mondays - Fridays, and open to the public Saturdays 10am - 4pm. The office is staffed for phone calls from 9am - 4pm Mon. - Fri. at (315) 673-1350. Dial 911 in case of emergency. We hope you enjoy your hike!

- BWNC Trails**
- Atkinson Arboretum Trail (0.3 miles) ◆
  - Pioneer Trail (0.2 miles) ◆
  - Backyard Wildlife Trail (0.2 miles) ◆
  - Faust Wildflower Garden (0.2 miles) ◆
  - Overlook Trail (0.7 miles) ◆
  - Valley Trail (0.5 miles) ◆
  - Field to Forest Trail (0.7 miles) ◆
  - Boundary Trail (1.7 miles) ◆
  - Griffiths Trail (0.2 miles) ◆
  - Harrison Trail (0.6 miles) ◆
  - Trail Access (0.1 miles)
  - ADA Trail (0.3 miles)

North

0 400 800 ft

- BW Preserve
- Interpretive Center
- Parking
- Pond
- Streams
- Contour Line (20 ft Interval)