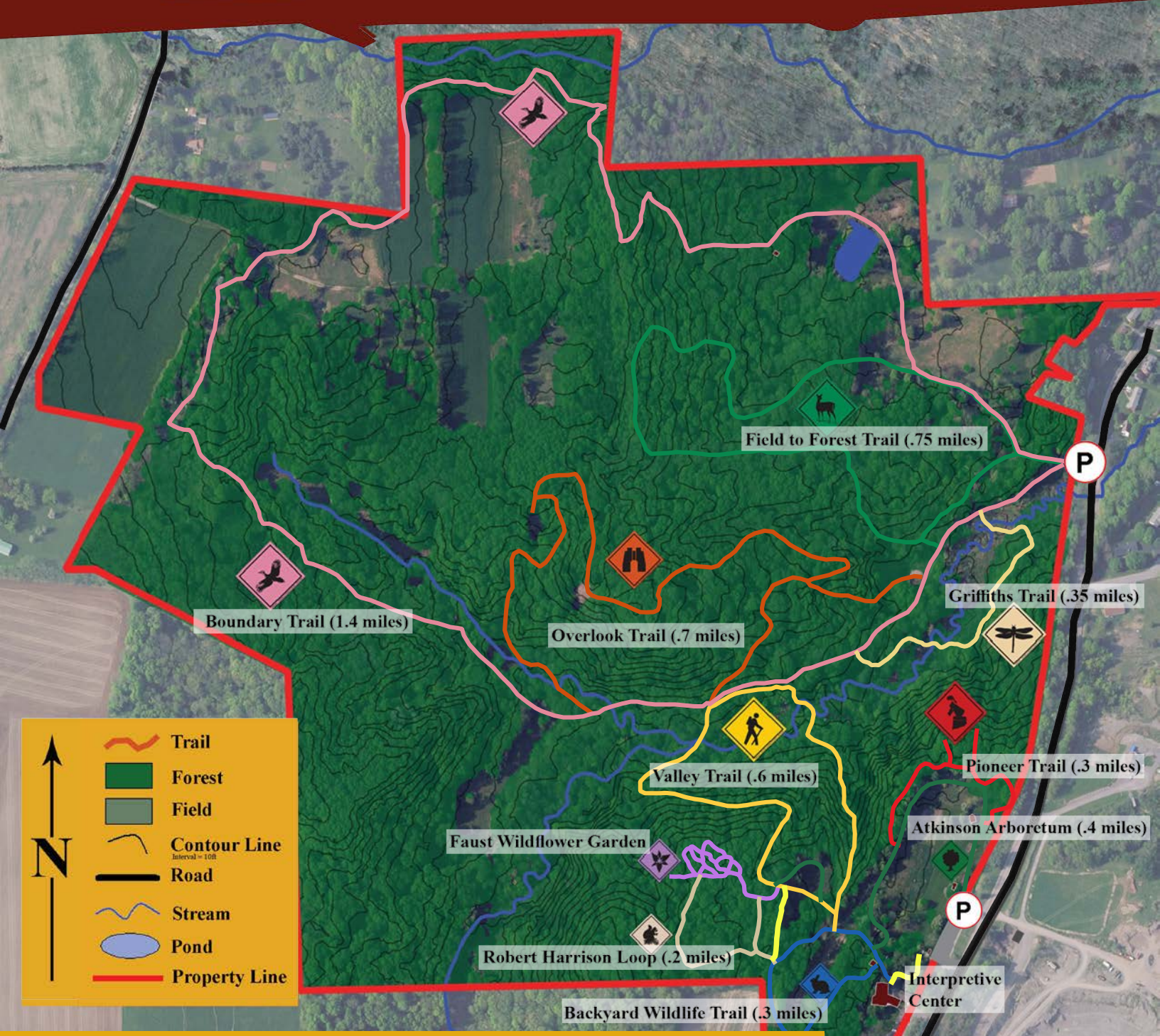




**Baltimore Woods  
Nature Center**  
*Nature in your hands*

# Trail Map



**Legend**

- Trail
- Forest
- Field
- Contour Line  
Interval = 10ft
- Road
- Stream
- Pond
- Property Line

Hiking trails are open daily from dawn to dusk. Face coverings are required when encountering camp and program groups along the trail. The Interpretive Center is currently closed to the public Mondays-Fridays, and open to the public Saturdays 10am - 4pm. The office is staffed for phone calls from 9am - 4pm Mon-Fri. at (315) 673-1350. Dial 9-1-1 in case of emergency. We hope you enjoy your hike!