



# the Overlook

SEPTEMBER - DECEMBER 2016 • Volume 30 • Number 3

## Changes of Time

Just as the seasonal winds of change are sweeping over the Central New York landscape, so too have changes in the political, social, and community landscapes affected Baltimore Woods Nature Center over the last 50 years. We have adapted, grown, and morphed into a premier educational organization. We are committed, as ever, to excellence and stewardship in all we do.

### IN THIS ISSUE...

- Page 1 A Seed Grown
- Page 2 Comings & Goings
- Page 3 Visit
- Page 4-6 Public Programs
- Page 7 Fall Day Camp
- Page 8 Nature in the City
- Page 9-10 Calendar
- Page 11 Get Involved
- Page 12 Winter Farmers Market



4007 Bishop Hill Road  
PO Box 133  
Marcellus, NY 13108-0133  
315.673.1350  
[www.baltimorewoods.org](http://www.baltimorewoods.org)

## A Seed Grown

By Thomas Meier

It is no easy task to summarize the last 50 years of Baltimore Woods Nature Center's history and accomplishments, nor to name and thank the countless individuals who have helped build and rebuild the organization over that time. It is a long, long list.

In an earlier newsletter, John Weeks introduced us to the formation of Onondaga Nature Centers (the organization's first name) and the early efforts in creating Beaver Lake Nature Center. By the early 1970s, ONC had hired its first executive director and teacher-naturalist, trails were being laid out, and plans for construction of the nature center were under way. That building was completed in 1975. ONC had also developed an award-winning county-wide school outreach program. Also, in 1975, ONC created a residential education program outside of Ithaca, NY called Cayuga Nature Center. In time, both Beaver Lake and CNC were doing very well. Save the County Land Trust had reached out to ONC to manage their new preserve at Baltimore Woods. In 1977 the operation of Beaver Lake was given over to the county, and CNC became its own organization in 1982. In effort to clarify ONC's status as a non-profit, the name was changed to Centers for Nature Education (CNE) in 1979.

Lean times were to follow. In the words of John Weeks, "The wind of change in Washington had finally reached Marcellus. A



variety of grants and business supports which had been CNE's lifeblood simply dried up." The staff of 12 was reduced to none. "CNE was for a time completely in the hands of volunteers, including Jack Gramlich as Director." Over the coming decades CNE "rose from the ashes...and began a gradual redefinition of its past self...still dedicated to excellence."

Throughout the 80s and 90s, CNE continued this rebirth through staff and volunteer dedication and popular programs and events. When Patty Weisse assumed the Executive Director position in 1999, the organization was poised to begin a new chapter. Under

her leadership the award-winning *Nature in the City* program took nature and science education to urban youth in Syracuse and Auburn. By 2003 the John A. Weeks Interpretive Center was built, opening the door for new program opportunities.

... continued on page 2, see GROWN

Join us for a  
VOLUNTEER  
COMMUNITY DINNER  
&  
**50th**  
ANNIVERSARY!

Tuesday, December 6th  
6-9pm

See page 6 for more details.





## About Us

Baltimore Woods is a premier educational organization that transforms individuals and communities by cultivating a personal connection to the natural world.

A colorized version of The Overlook newsletter is available online at [www.baltimorewoods.org](http://www.baltimorewoods.org).

Reproduction without permission is prohibited.

## Interpretive Center Hours

Monday-Friday,  
9am-4pm

Saturday,  
10am-4pm

Closed September 3, September 5,  
November 24,  
December 24 – January 1

Hiking trails are open every day  
from dawn to dusk.

No admission fees and  
free parking.

Nature is in your Hands ...  
and on the `Net.

Find us on the web at  
[www.baltimorewoods.org](http://www.baltimorewoods.org)  
or on social media!



## Grown

... continued from front page

In 2008, “Centers for Nature Education” had become synonymous with Baltimore Woods. Instead of fighting that identity, CNE chose to change its name to Baltimore Woods Nature Center. The mission was also redefined. Today, BWNC seeks to transform individuals and communities through place-based education.

So here we are, 50 years later. The *Nature in the City* program reaches every student in all 19 elementary schools in Syracuse and is gaining interest and support from other school districts in the area. The Summer Nature Day Camp program has been helping children reap the benefits of a positive personal connection to nature for 32 years. The new homeschool and preschool program series are proving to be successful. The staff has grown to

accommodate the increased activity, and the stalwart A-team volunteers take care of the trails and curb the tide of invasive plant species at The Woods.

Today, just as in years gone by, Baltimore Woods Nature Center is a thriving community-based educational organization that connects the people of Central New York to the wonder and beauty of the natural world, serving as a model of sensible stewardship for generations to come. Like a strong tree, all of our parts work together to keep the vision alive. The tireless efforts of generations of staff, volunteers, board members, community members and supporters have taken the seed Jack Calvert and his contemporaries planted 50 years ago and helped it grow into the organization we all love and count on today.

## Baltimore Woods Comings & Goings

### Welcome Margaret Foley to the Program Team!

Baltimore Woods is happy to announce that Margaret Foley joined our program team this spring! Margaret graduated from SUNY-ESF in 2016 with a B.S. in Environmental Biology. While she loves learning about all areas of environmental biology, Margaret is most interested in botany, the study of plants. In addition to hiking and spending time outdoors, Margaret enjoys spending her free time reading, nature journaling and spending time with family. She is excited to get to share her knowledge and passion of the outdoors to inspire the next generation of environmentalists.



Margaret Foley



Emily Van Ness

### Heartfelt Goodbyes to Mary Kate and Emily!

After 3 1/2 years as Baltimore Woods Executive Director, **Mary Kate Intaglietta** will be leaving The Woods to pursue a new opportunity with Paige’s Butterfly Run, where she will serve as the organization’s Executive Director. We appreciate the time, talent, and energy she has committed to expanding the mission of Baltimore Woods in our community, and we wish her well!

**Emily Van Ness**, Environmental Educator for The Woods, said goodbye in mid-August and moved on to pursue opportunities in the field of environmental education and interpretation. In her time at The Woods Emily has been a dedicated camp counselor to hundreds of kids, delivered countless lessons and served as assessment coordinator for our *Nature in the City* program. She has also been our beloved Fairy Queen at a number of programs. Emily will most certainly be missed by all of us at The Woods!



## This Season at Baltimore Woods...

By Patrick Burke

With the extreme hot temperatures we've experienced this summer, it may be difficult to imagine the coming of Fall, but it will eventually be here, and when it does it'll set off the migratory movements of millions of birds to warmer climes, but did you know it also signals the flight of the Darner dragonfly?

The Darner is one of 50 species out of over 5,000 that also wing their way towards warmer regions for the fall and winter seasons. Scientists follow the tiny winged insects by tagging them with radio chips that are glued to their undersides. In order to make the trip, some of these tiny creatures, that may weigh no more than 0.1 ounces, must store fat through the summer months and then wait for favorable winds.

The dragonflies follow a migratory path similar to the birds, and have been known to fly 160km (100 miles) per day. When observed flying off the course, the Darner appears to have an instinctual ability to correct its flight path; this may have to do with an internal magnetic compass. When the fall Darner finally reaches its southern destination, it will not return to its northern climes, but is replaced by the prior year's offspring who return home to begin the cycle again. Look for Darner dragonflies as you wander near the ponds and fields at Baltimore Woods.



## Exotic Invasive Plants at The Woods

By Fran Lawlor, Land Manager

If you walk the trails here at Baltimore Woods you are acutely aware of the different vegetation communities on our 187 acre preserve. There are stretches of trails, particularly along the Valley Trail and the Field to Forest Trail, that have a deep, tranquil feeling. These sections of trail go through the oldest forests on the trail system. The understory vegetation, the plants on the forest floor, are plentiful and diverse; they are the native plants we expect to see in a mature forest. The trees are the largest on the preserve. We have aerial photos from 1938 that show these forest sections were under full tree cover then.

That natural vegetated state of lands in Central NY is forest. Rainfall is abundant and can support a wide range of tree species and associated understory vegetation. Natural grasslands are rare and usually an artifact of human management. Maintaining grassland is labor and

resource intensive. We struggle, here at the Woods, to manage buckthorn, honeysuckle and other shrubs that birds seed into the meadows we try to maintain. Weeks Meadow is a good example of efforts to keep meadows open. We mow the open areas on a three-year rotation to keep shrubs and trees from dominating. We do it because the grasslands are a welcome habitat that increases bird diversity on the preserve.

This summer we have been mowing areas on the Boundary Trail (west side of the preserve) and on the Field to Forest Trail as they are heavily infested with swallowwort. A member of the milkweed family, swallowwort is a serious threat to monarch butterflies. Monarchs cue into the similar chemical signals of this exotic Eurasian milkweed and lay their eggs on it, but the plant's chemistry is too different and as a result Monarch larvae hatch and die.

... continued on page 7, see INVASIVE

## Art Gallery

*leaves upon leaves*  
By artist Dan Bacich

September 9 – October 27

Art Reception:  
September 10, 2-4pm



Autumn Semaphore



Gold Leaf

### Upcoming in the Gallery

## Member's Art Exhibit

Friday November 4 –  
Friday December 23

### Call for Artists!

*Drawing on Talent* Exhibit  
Members of Baltimore Woods are invited to submit work to our 8th annual members' exhibit, *Drawing on Talent*, to be held **November 4 – December 23** with an artist reception scheduled for **November 5, 2-4pm**.

Visit [www.baltimorewoods.org](http://www.baltimorewoods.org) or stop by The Woods to pick up the entry form and guidelines. Submission deadline is October 21st.



# September

## 9 Star Party: Goodbye Summer Skies 8-10pm

Say goodbye to summer skies, and view the softer constellations of Autumn. Neptune will be visible, as well maybe our last look at Saturn before it sets. Venus is getting bigger and brighter. We will also get a good look at the first-quarter moon, displaying a wealth of craters and mountain ranges. Back-up date: September 10. For all ages. \$6 for members; \$9 for nonmembers.

## 10 Art Reception for Dan Bacich's *leaves upon leaves* exhibit 2-4pm

## 24 Bats 6:30-8pm

Misunderstood by many, repulsive to some, and feared by others, come spend an evening, indoors and out, as we find out why bats are truly beneficial creatures, with undeserved reputations. Meet at the lower parking lot. For ages 8 and up. \$6 for members; \$9 for nonmembers.



# October

## 8 Patron Hike 1-3pm

The forests of Baltimore Woods keep many secrets. This hike along the Boundary Trail will teach you to unlock the mysteries of a forested landscape, revealing the history and the ever changing relationships between people and the land, as told through the eyes of the colorful autumn trees. This hike is a free member benefit for members at the patron level and higher. You are invited to bring two guests with you. This program is recommended for adults.

## 8 Winter Farmers Market 10am-1pm



## 15 Autumnal Fairy Festival at Baltimore Woods 12-4pm

One remarkable day in autumn, when the trees are a flutter with the colors of fall, the enchanted side of Baltimore Woods shimmers through. Fairies, trolls, and other fantastical creatures can be seen and heard frolicking through the forest. All humans and magical beings are invited to meet the fairy queen, explore the enchanted trails, stroll through our labyrinth and make fairy houses in the gardens! Costumes are encouraged and imagination is a must! More details can be found on our website. \$10 members, \$15 nonmembers.

## 21 Star Party: Hello Fall Skies 8-10pm

The Orionid meteor shower peaks at this time, plus Venus, Uranus and Neptune are in great viewing positions. The fall skies, with their many bright galaxies, will be visible through telescopes. Bring a lawn chair to lie back and watch for meteors. Back-up date: October 22. For all ages. \$6 for members; \$9 for nonmembers.

## 29 Autumnal Owl Prowl 7-8:30pm

The owls are out! Join a naturalist on a nighttime hike in search of these magnificent and secretive birds. Dress warmly, and bring a flashlight. \$6 for members; \$9 for nonmembers. This program is intended for ages 8 and up.



# November

## 4 Star Party: Taurid Meteor Shower 7:00 – 9:30pm

This is the night of the Taurid meteor shower. Venus, Uranus and Neptune will be visible, as well as the start of the winter skies, with their bright nebulae and star clusters. Bring a lawn chair to lie back and watch for meteors. Back-up date: November 5. For all ages. \$6 for members; \$9 for nonmembers.

## 5 Drawing on Talent Art Reception 2-4pm

Join us for an artist reception in the gallery and browse the work of dozens of Baltimore Woods member artists. Admission and parking are free. The exhibit will run November 4th – December 23.

## 11 Nature Adventure Day Camp: Raiders of the Lost Woods 9am-4pm

School Break Camp!  
See page 7 for details.

## 12 Winter Farmers Market 10am-1pm

## 12 Scented Delights 10:30-11:30am

Gather herbs from our garden to create one of a kind soaps and candles in this fun workshop for all ages! These make excellent gifts or keep them to enjoy just for you. Recommended for ages 5 and up. \$6 for members; \$9 for nonmembers.

## 19 Diggin' History and Talkin' Trash 1-3pm

Take a walk through Baltimore Woods to discover the history buried in the landscape. The remnants of old farmsteads tell stories of the people who lived here long ago, giving us some food for thought about what stories we are leaving behind today. Ages 10 and up. \$6 for members; \$9 for nonmembers.

## 24 Building Closed for Thanksgiving

The Interpretive Center will be closed for the holiday. Trails are open dawn to dusk. The center will re-open on Friday, November 25.

## Volunteer Lunches

12:30pm

September 21

October 19

November 16

Baltimore Woods greatly appreciates all the volunteers who give their time and efforts to help further our mission, and so, on the third Wednesday of the month, we invite our volunteers to a lunch of locally harvested foods at the Interpretive Center.

All volunteers are welcome!

Please call 673-1350  
to RSVP.

## 28 Decorations, Naturally! 10-11am and 7-8pm

Using natural materials, it is possible for anyone to create a beautiful holiday swag or spray when coached by a talented artist like Regina Lewis Middleton! She will lead a class in creating beautiful and unique holiday sprays or swags from greens, pine cones, and other natural materials. Only the wire and ribbon will not come from The Woods! You can have the pleasure of creating a swag or spray with your own hands to enjoy during the holiday season. All materials will be supplied. Recommended for ages 10 and up. \$20 for members; \$30 for nonmembers.

To register for a program, visit [www.baltimorewoods.org](http://www.baltimorewoods.org)



## December

### 6 Volunteer Community Dinner & Anniversary Celebration 6-9pm

Baltimore Woods Nature Center invites our volunteers to a special 50th anniversary celebration in conjunction with our annual holiday dinner at The Woods. This is our chance to give back to the community that has given so much to us. Due to space limitations, registration is required. Please RSVP to 673-1350 or online at [baltimorewoods.org](http://baltimorewoods.org) by November 30.

### 10 Winter Farmers Market 10am-1pm

### 10 Caroling in the woods 7-8:30pm

Pick up a lantern and song sheet and enjoy a beloved tradition at Baltimore Woods. Bring natural treats to hang for the birds (no rosehips or bittersweet as they are invasive to our woods) and holiday treats to share with fellow carolers. This event is free for all, and as always, donations are appreciated. Please bring cookies to share. Lanterns will be provided. Bring a flashlight if you prefer. Meet in the pavilion. This program is free; please RSVP on our website.

### 13 Star Party: Geminid Meteor Shower 7-10pm

This is the night of the Geminid meteor shower, the year's finest. Even though the moon will be nearly full, many Geminids are so bright they can still be seen. Bring a lawn chair to lie back and watch for meteors, and enjoy telescope views of some of the brightest winter star clusters and nebulae. Depending on the tree line, we MIGHT get a quick peek at Mercury just as it gets dark. Uranus and Neptune will be visible all evening. Venus will be a bold crescent just before dark. Back-up date: December 14. For all ages. \$6 for members; \$9 for nonmembers.

### 17 Solstice Hike 7-8:30pm

Join us for a tranquil, lantern-lit hike through the woods to observe the longest night of the year. Learn about ancient solstice traditions and celebrate the return of the sun by exploring the sights and sounds of nature at night. Snowshoes will be provided. Dress warmly! This program is recommended for ages 8 and up. \$6 for members; \$9 for nonmembers.

### 24 – January 1 Building Closed for Holidays

## Nature's Little Explorer Fall Series

Wednesdays or Thursdays, September 28 – November 10  
(no classes on October 19 & 20)

10-11am

Join us for Nature's Little Explorers Mini Adventures! This fun-filled, six-week series will engage your preschooler through nature crafts and hands-on exploration that will awaken their senses to the wonders of the natural world. Two session offerings on Wednesdays or Thursdays. Ages 3-5, participants must register for the full series and be accompanied by an adult.

**\$35 for members,  
\$50 for nonmembers**



## Homeschool Adventures in Nature Fall Series

Tuesdays, September 27 – November 8  
(no class on October 18)

10-11am

Come out to Baltimore Woods to add some environmental education to your biology, ecology, and geology curricula! We will meet every Tuesday for six weeks – a great opportunity for hands-on science learning, outdoor exploration, meeting other homeschool students, and getting help with projects. Visit our website for full details and weekly themes. Ages 5 and up, participants must register for the full series and be accompanied by an adult. No program on October 18.

**\$35 for members,  
\$50 for nonmembers.**





# Veterans Day Adventure Camp: Raiders of the Lost Woods

**November 11, 9am-4pm**

It's a race against time as teams compete to find hidden artifacts in the woods!  
Follow clues, solve riddles, and master physical challenges.  
It'll take all your wits and bravery to save the day!

**Grades K-8,  
camp runs from 9am-4pm,  
before and after care available.  
Cost is \$45/camper.**

**Visit our website for more details and to register.**



## Invasive

... continued from page 3

There is a correlation between historic agricultural land use and infestation by exotic invasive plants. Exotic plants are documented to be unable to support scores of native insects and other fauna that depend on the displaced native plants. The former agricultural management plus the chemical engineering of the soil by the introduced exotic plants exclude the recovery of native plants without a lot of intervention on our part. The missing native plants and insects mean reduced ability of those invaded areas to support a diversity of birds, amphibians and other fauna that depend on the missing insects.

We are mapping the invasive plant problem on the preserve to help us make management decisions that will preserve the high quality habitats and, hopefully, restore lost habitat for the plants and associated insects that feed the birds we love to see. Our goal is continued, and expanded, healthy forest habitat. If you are interested in helping us in our efforts, please get in touch.

**For more details and to register online for a camp,  
visit [www.baltimorewoods.org](http://www.baltimorewoods.org)**



## Nature in the City

Sponsors for 2016-2017 School Year

Key Bank  
 Lockheed Martin  
 Time Warner Cable -  
 Connect a Million Minds  
 Jim and Juli Boeheim Foundation  
 Carrier  
 SRC, Inc.  
 First Niagara Bank  
 Carrolls Corporation  
 SECNY  
 Syracuse City School District  
 Onondaga County Dept. of  
 Water Environmental Protection

## Nature in the City

Sponsors for 2015-2016 School Year

Friends of Bellevue  
 The Jim & Juli Boeheim Foundation  
 Friends of Franklin  
 Friends of Frazer  
 Friends of Hughes  
 Friends of Huntington  
 SUNY Upstate  
 Golub Foundation  
 Mohawk Global Logistics  
 Madden School of Business  
 Le Moyne College of Arts &  
 Sciences  
 Friend of McKinley-Brighton  
 Lockheed Martin  
 Employee Federated Fund  
 Time Warner Cable  
 Connect a Million Minds  
 National Grid  
 Lockheed Martin  
 Key Bank  
 Carrier  
 SRC, Inc.  
 Byrne Dairy  
 O'Brien & Gere  
 First Niagara Bank  
 Central New York  
 Community Foundation  
 Empire State College  
 Dominion

Thank you to our  
 2016-2017  
*Nature in the City*  
 MEDIA PARTNER

**BJ** Business Journal  
**NN** News Network

## Nature in the City News!

### Nature in the City - Back in Session!

School is back in session and all of us at Baltimore Woods are excited to see our thousands of friends in the Syracuse City School District! From wide-eyed students to enthusiastic teachers and passionate administrators, we are proud to begin the 15th year of our partnership.

As we reflect on the program's roots, it is incredible to see the growth that has occurred. At its inception, the program began with lessons delivered to students in one school, then gradually grew to serving students in 11 elementary schools, to where we are today. Kindergarten through 6th grade students in all 19 elementary schools are receiving three, hour-long, hands-on/minds-on science lessons in classrooms and surrounding neighborhood green spaces, all of which have increased students' understanding of key science benchmarks each year.

In 2015, we saw a year of incredible growth in our *Nature in the City* program, ranging from new community sponsors, a partnership with the Central New York Business Journal - complete with ad space, the creation of a password protected teacher portal with a shared program calendar and wrap-around activities, and a \$10,000 grant to participate in the Central New York Community Foundation's



Performance Management Community. The grant from the Central New York Community Foundation not only allowed our organization to refine our evaluation process by implementing a staggered testing method, but also to continue to assess the quality of our program in grades 2nd, 3rd, and 5th in all 19 elementary schools. The awarding of this grant not only reflects the high caliber of our programming, but also speaks to the quality of the work put forth by our environmental education team.

As we dive into the 2016 - 2017 school year, we are excited to engage new community partners in the program and welcome back our long time partners. We thank you and the entire Central New York community for working with us to continue to inspire thousands of students in the world of environmental science and stewardship.





Sunday

Monday

Tuesday

Wednesday

Thursday

Friday

Saturday

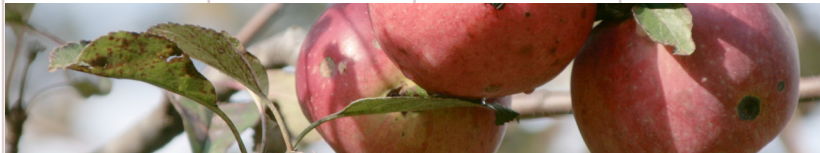
# September


While bats usually use echolocation to help them navigate in the dark, they are not actually blind.

4	5 Building Closed	6	7	8	9	10 Art Exhibit Opens Star Party: Goodbye Summer Skies 8-10pm	11	12	13	14	15	16  Harvest Moon	17	18	19	20	21 Volunteer Lunch 12:30pm	22	23	24 Bats 6:30-8pm	25	26	27 Homeschool Series 10-11am	28 Nature's Little Explorers 10-11am	29 Nature's Little Explorers 10-11am	30
---	----------------------	---	---	---	---	--	----	----	----	----	----	---	----	----	----	----	-------------------------------	----	----	---------------------	----	----	---------------------------------	---	---	----

As the days get shorter birds like the dark-eyed junco are already getting ready for winter.

# October



2	3	4 Homeschool Series 10-11am	5 Nature's Little Explorers 10-11am	6 Nature's Little Explorers 10-11am	7	8 Patron Hike 1-3pm Winter Farmers Market 10am-1pm	9	10	11 Homeschool Series 10-11am	12 Nature's Little Explorers 10-11am	13 Nature's Little Explorers 10-11am	14	15 Autumnal Fairy Fest 12-4pm	16  Hunter's Moon	17	18	19 Volunteer Lunch 12:30pm	20	21 Star Party: Hello Fall Skies 8-10pm	22	23	24	25 Homeschool Series 10-11am	26 Nature's Little Explorers 10-11am	27 Nature's Little Explorers 10-11am	28	29 Owl Prowl 7-8:30pm	30	31
---	---	--------------------------------	--	--	---	--	---	----	---------------------------------	---	---	----	----------------------------------	--	----	----	-------------------------------	----	---	----	----	----	---------------------------------	---	---	----	--------------------------	----	----

A gall is an abnormal growth of a plant in response to insect larvae parasites.

clip and save

Sunday

Monday

Tuesday

Wednesday

Thursday

Friday

Saturday

# November

6

7

Homeschool Series  
10-11am

Nature's Little Explorers  
10-11am

Nature's Little Explorers  
10-11am

Art Exhibit Opens  
Star Party: Meteor Shower  
7-9:30pm

Art Reception  
2-4pm

Keep an eye out for the "Supermoon" on November 14th.

13



Beaver Moon

Homeschool Series  
10-11am

Nature's Little Explorers  
10-11am

Nature's Little Explorers  
10-11am

Adventure Day Camp: Raiders of the Lost Woods  
9am-4pm

Winter Farmers Market  
10am-1pm  
Scented Delights  
10:30 - 11:30am

Volunteer Lunch  
12:30pm

Diggin' History and Talkin' Trash  
1-3pm

20

21

22

23

Building Closed

Green Holiday Gift Shop Sale

Green Holiday Gift Shop Sale

Deciduous trees lose their leaves in the winter to conserve water.

27

Decorations, Naturally  
10-11am & 7-8pm

29

30

# December



4

5

Volunteer Community Dinner  
6-9pm

7

8

9

Winter Farmers Market  
10am-1pm  
Caroling in The Woods  
7-8:30pm

11

12

Star Party: Meteor Shower  
7-10pm

Cold Moon

14

15

16

Solstice Hike  
7-8:30pm

18

19

20

21

22

23

Interpretive Center Closed

Holly berries are an important food source for a lot of birds and small mammals.

25

26

Interpretive Center Closed from December 24 - January 1

27

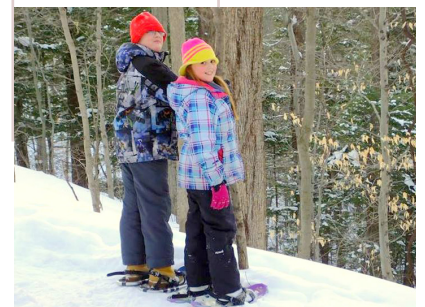
28

29

30

31

Mistletoe has many other common names, including birdlime, all-heal, and devil's fuge.





## Volunteer Spotlight

By Sue Jones

Thanks to the help of many volunteers, both of our annual spring fund raisers were successful this year, contributing critical, unrestricted income to the operating budget. We thank our gracious and generous hosts, the Hanfords, and the volunteers who helped The Woods net over \$13,000 at the annual Mother's Day Tour at Sycamore Hill Gardens. Plantasia, our annual spring festival and plant sale is an enjoyable event with two important goals: fund raising and native plant promotion. The three day event requires lots of volunteer assistance that paid off this year in a net gain of over \$5,300, as well as many gift shop sales and many new or renewed memberships.



While dozens of volunteers helped make these successes possible, Bonnie Shanahan, Jane Chamberlain and Jane Hastedt worked at both the Garden Tour and the Plant Sale this year. We thank them (and all our volunteers) for all of their assistance.

## Join Baltimore Woods

*Share your love of nature*

**GIFT MEMBERSHIPS**

available online at

[www.baltimorewoods.org](http://www.baltimorewoods.org)

### Baltimore Woods Nature Center members receive the best ...

- nature observation and enjoyment
- flower, herb, and wildflower gardens
- adventure nature day camps
- 6+ miles of hiking trails
- public programs year-round for seniors, adults, families, and children
- art gallery with members-only exhibit
- bird-watching station
- snowshoes for hiking the trails
- rental space for private events
- volunteer opportunities in many areas

## Anniversary Trail Run: A Happy Finish For All!

Thank you to all participants in the Baltimore Woods 50th Anniversary 5K Trail Run! Over 140 runners turned out on August 21 and enjoyed a lively run along our beautiful trails. The top three overall male and female finishers as well as the winners of five age divisions received prizes. Kids shared in the fun with a friendly 1K run. The Ambassador of Sound, our own Patrick Burke, livened up the morning with music. Baltimore Woods thanks the race sponsors: Wegmans, Doug's Fish Fry in Skaneateles, CH Insurance, Dr. Taryn Jirousek Family Dentistry, and Friends of Baltimore Woods. Thanks to our hard working volunteers and to all of the local businesses and organizations that supplied equipment, parking space, prizes, and refreshments. The race introduced The Woods to a new audience, generated over \$3000 in revenue, and was great fun!



CONGRATULATIONS

## Margaret Blystone!

Overlook readers may remember that last year, when the pavilion was named in honor of former director Patty Weisse, a scholarship for a graduating senior from Marcellus High School interested in studying science in college was also created by generous donors. The first recipient of the Patty Weisse Education Assistance Award is Margaret Blystone. She received the award in June and will attend SUNY Binghamton this fall to study chemical engineering.

### Annual Membership Level

- \$20 Senior/Student
- \$30 Individual
- \$40 Family
- \$100-\$200 Patron
- \$1000 Life
- Donation Amount \_\_\_\_\_  
(in addition to membership)

\_\_\_\_\_  
Name

\_\_\_\_\_  
Address

**Make checks payable to:  
Baltimore Woods Nature Center**

**To pay by credit card:**

\_\_\_\_\_  
Credit Card Number

\_\_\_\_\_  
Exp. Date      CVV (3-digit code on back)

\_\_\_\_\_  
Signature

**Return this coupon with payment to:  
Baltimore Woods Nature Center  
P.O. Box 133  
Marcellus, NY 13108-0133**





**Baltimore Woods  
Nature Center**

*Nature in your hands*

PO Box 133  
Marcellus, NY 13108-0133

**Save the Date  
Green Gift Shop Sale**

**Friday, November 25,  
9am-4pm**

**Saturday, November 26,  
10am-4pm**

**Avoid the Black Friday  
Madness.**

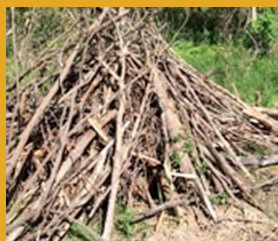
**Come to The Woods to  
shop and hike!**

**Special gift shop savings  
for members!**

Non-profit Organization  
U.S. Postage Paid  
Marcellus,  
New York  
Permit Number 9

ADDRESS SERVICE REQUESTED

**NATURE TIP:**



Want an easy way to clear your yard of stray branches and twigs while also helping the wildlife prepare for winter? Build a brush pile with lots of nooks and crannies to provide a safe home for birds, chipmunks, rabbits, and hibernating reptiles, amphibians, and insects. Brush piles not only help animals hide from predators, they also help protect them from the weather!

**Fresh. Local. Delicious. Nutritious. Wonderful!**

*the* **WINTER MARKET** *at*  
BALTIMORE WOODS

Opening again this year and offering an extra month for your eating and shopping pleasure!

The market will run from 10-1 the second Saturday of each month, from October until April. Come and purchase locally grown and produced products to enjoy fresher and more delicious food while vastly reducing the carbon footprint of your food.

Mark your calendar for  
**October 8, November 12, December 10, January 14,  
February 11, March 11 & April 8.**

There may be some surprises during the season, such as cooking demonstrations, or samplings, so watch our website as details firm up. As vendors sign up to participate, we will update the website with this information as well.

*There is no admission or parking fee.*